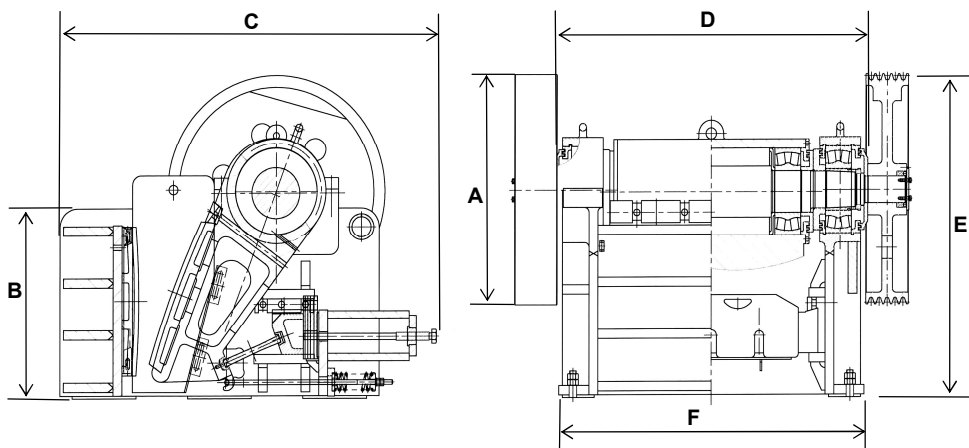




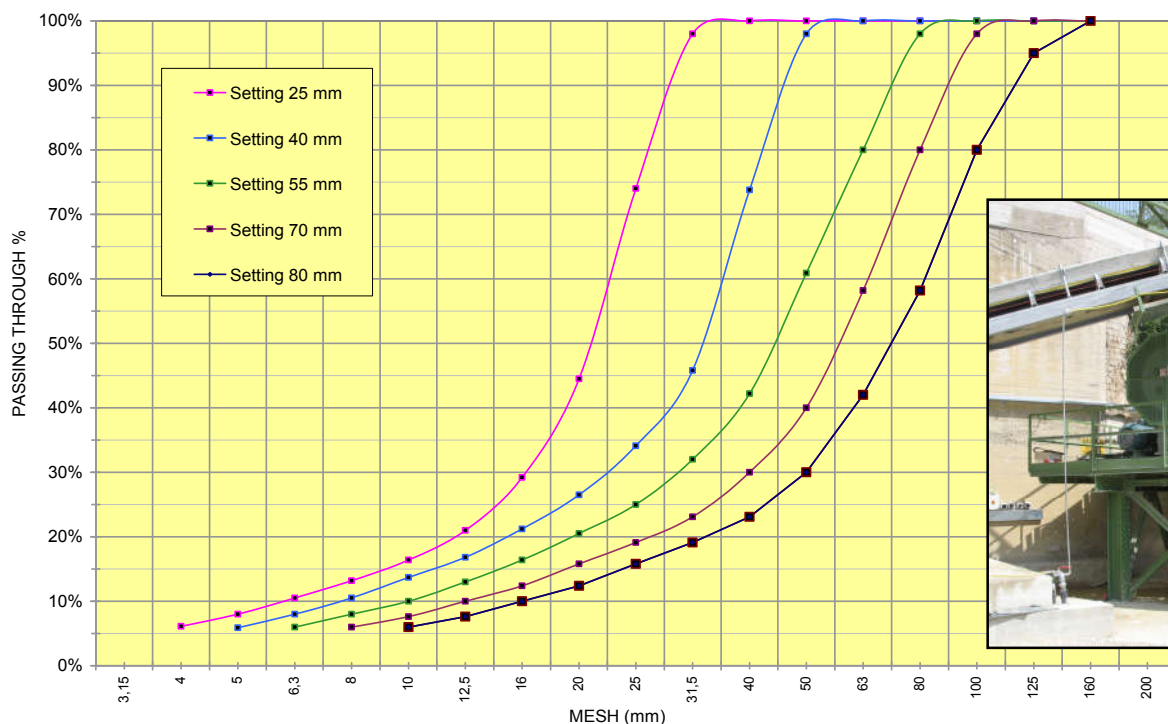
MFS

FRANTOIO SECONDARIO A MASCELLE SECONDARY JAW CRUSHER CONCASSEUR SECONDAIRE A MACHOIRES



Modello Model Modèle	Peso Weight Poids (Kg)	Dimensioni Dimensions Dimensions (mm)						Dim. bocca di carico Feeding opening Dim. bouche d'alim. (mm)	Apertura di scarico Discharge opening Réglage sortie (mm)	Pezatura max alim. Max feeding size Pièce max alimentation (mm)	Produzione Output Production (t/h)	N. giri Operating speed Vitesse (RPM)	Potenza Power Puissance (Kw)
		A (Ø)	B	C	D	E	F						
MFS-075-035	6800	800	850	1580	1880	1430	1100	750 x 350	20-80	300	15-50	300	30
MFS-100-025	6300	900	850	1530	1990	1380	1400	1000 x 250	25-60	210	30-55	330	30-37
MFS-120-025	7700	1000	850	1900	2190	1430	1700	1200 x 250	25-60	210	40-65	330	37
MFS-120-035	11430	1225	1020	2125	2250	1725	170	1200 x 350	50-100	300	70-140	300	55

PRODUCT CURVES OF SECONDARY JAW CRUSHER mod. "MFS"



I DATI SOPRA RIPORTATI NON SONO IMPEGNATIVI E POSSONO SUBIRE VARIAZIONI SENZA PREAVVISO. THE ABOVE DATA ARE NOT BINDING AND THEY CAN BE ALTERED WITHOUT NOTICE.
LES DONNÉES SUS-INDIQUÉES NE COMPORTENT AUCUN ENGAGEMENT ET PEUVENT ÊTRE CHANGÉES SANS PRÉAVIS.