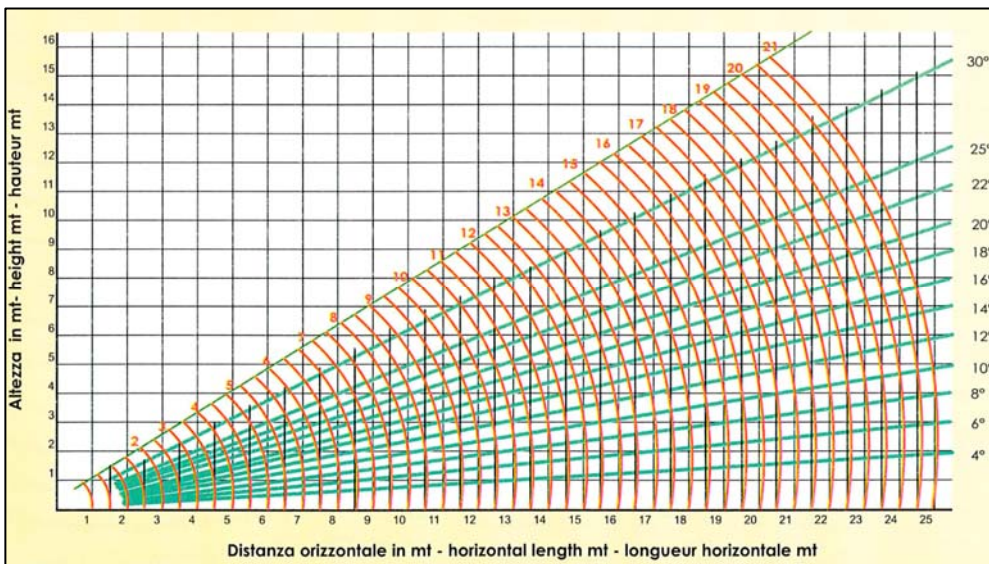
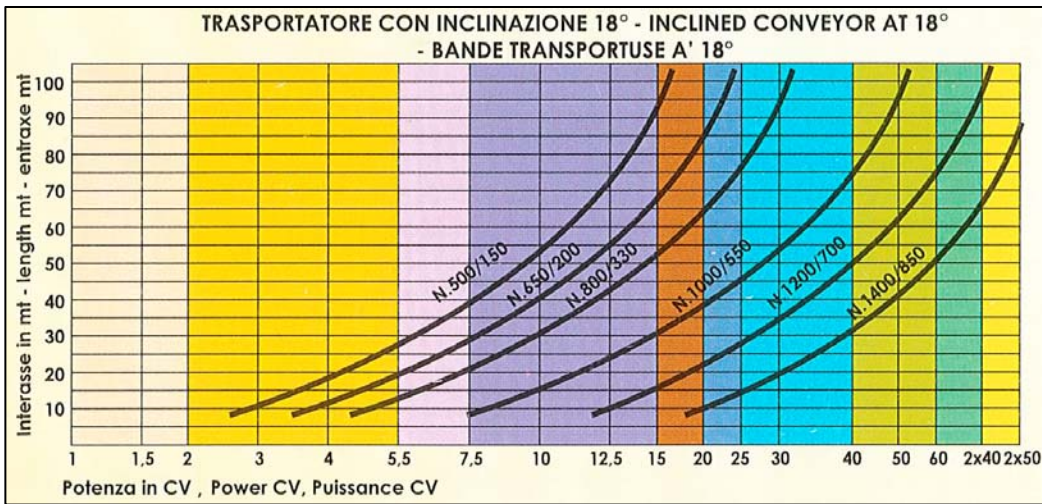
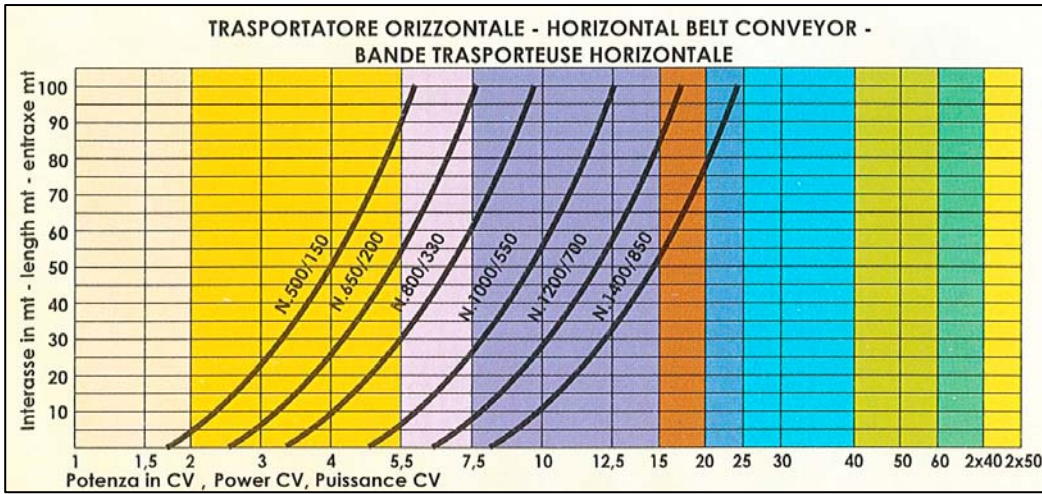




N

NASTRI TRASPORTATORI - CONVEYOR BELTS - BANDES TRANSPORTEUSES



Modello Model Modèle	Larghezza telo Band width Largeur toile (mm)	Larghezza traliccio Framework width Largeur treillis (mm)	Velocità nastro Band speed Vitesse bande (m/sec)	Portata max consigliata Max capacity suggested Débit max conseillée (18°)	Pezzatura max trasportabile Max transportable size Pièce max transportable (mm)	Disposizione rulli Carrying rollers Disposition des rouleaux
N-050	500	870	1,5	100	125	
N-065	650	1020	1,75	220	170	
N-080	800	1240	1,75	340	225	
N-100	1000	1460	2	630	300	
N-120	1200	1680	2	960	300	

I DATI SOPRA RIPORTATI NON SONO IMPEGNATIVI E POSSONO SUBIRE VARIAZIONI SENZA PREAVVISO. / THE ABOVE DATA ARE NOT BINDING AND THEY CAN BE ALTERED WITHOUT NOTICE. / LES DONNÉES SUS-INDIQUÉES NE COMPORTENT AUCUN ENGAGEMENT ET PEUVENT ÊTRE CHANGÉES SANS PRÉAVIS.