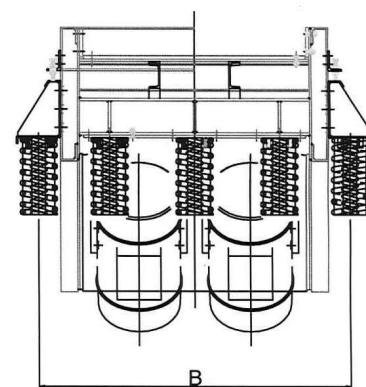
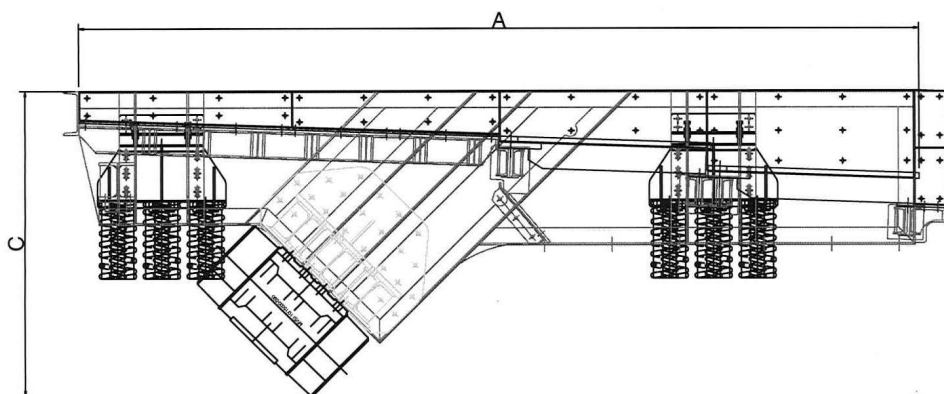




MAS ALIMENTATORE SGROSSATORE "GRIZZLY" "GRIZZLY" SCALPER FEEDER ALIMENTATEUR SCALPEUR "GRIZZLY"



| Modello Model Modèle | Dimensioni Dimensions Dimensions (mm) | Pezzatura max alimentazione Max feeding size Pièce max alimentation (mm) | Portata Capacity Débit (t/h) | Potenza Power Puissance (kW) | Peso Weight Poids (kg) | Dimensioni Dimensions Dimensions (mm) | | |
|----------------------------|--|---|---|---|-------------------------------------|--|------|------|
| | | | | | | A | B | C |
| MAS-090-320 | 900 x 3200 | 500 | 40-100 | 2,2+2,2 | 2550 | 3307 | 1430 | 1450 |
| MAS-096-380 | 960 x 3800 | 500 | 80-150 | 3,7+3,7 | 3240 | 3870 | 1860 | 1190 |
| MAS-110-490 | 1100 x 4900 | 600 | 120-280 | 10,6+10,6 | 5300 | 4957 | 1850 | 1350 |
| MAS-110-590 | 1100 x 5900 | 600 | 250-350 | 10,6+10,6 | 6300 | 6000 | 1840 | 1400 |
| MAS-130-600 | 1300 x 6000 | 800 | 350-450 | 13+13 | 8800 | 6800 | 2200 | 1450 |
| MAS-150-600 | 1500 x 6000 | 1000 | 350-600 | 19+19 | 12900 | 6800 | 3000 | 2000 |

I DATI SOPRA RIPORTATI NON SONO IMPEGNATIVI E POSSONO SUBIRE VARIAZIONI SENZA PREAVVISO.
THE ABOVE DATA ARE NOT BINDING AND THEY CAN BE ALTERED WITHOUT NOTICE.
LES DONNÉES SUS-INDIQUÉES NE COMPORTENT AUCUN ENGAGEMENT ET PEUVENT ÊTRE CHANGÉES SANS PRÉAVIS.